

Visitor Map of Aldeburgh

Thorpeness, Leiston and the local area



A guide to the best places to:
VISIT • SHOP • EAT • STAY

Welcome to Aldeburgh, a charming seaside town with a fabulous selection of shops, cafés and restaurants. Enjoy fish and chips on the beach, visit the famous Scallop, and then take time to explore the delights of Thorpeness and Leiston further along the coast.

Aldeburgh Cinema Trust

SHOWING THE **BEST** IN
BIG-SCREEN ENTERTAINMENT

www.aldeburghcinema.co.uk | BOX OFFICE: 01728 454 884

Book your next stay with us and choose from over 300 properties
Use the code **'ALDMAP357'** to save 10% online!

Stay in Suffolk

46 High Street, Aldeburgh (Opposite Cinema)

Mon - Fri 9am - 5pm | Sat 10am - 4pm | Sun By Appointment
Book online at www.stayinsuffolk.com or contact us on 01728 685262 or office@stayinsuffolk.com

The Red House,
Aldeburgh

The home of composer Benjamin Britten and singer Peter Pears
Open seasonally, Aldeburgh IP15 5PZ
brittenpears.org 01728 451700

ALDE CAFE

SERVING ALL DAY
BREAKFAST
'Best Breakfast in Suffolk'

Tuesday to Sunday
9am to 2pm

2 Hall Farm
Saxmundham Road
Aldeburgh IP15 5JD
@alde_cafe

VINTAGE ANGELS

Vintage & Designer Clothes for Women & Men

Opening Hours
Weds to Sun 11am-4pm
Call Hilary on 07879 630461
Hall Farm, Aldeburgh, IP15 5JD
@vintage_angels_aldeburgh

THE EXOTIC GARDEN CO. & PLANET POT

A nursery with a difference, full of shrubs, perennials, bedding, treeferns, palms, bamboos, bougainvilleas and bananas. Plus the largest selection of garden pots, along with steel chimineas, statues and ornaments

Open 7 days a week | T: 01728 454456
www.theexoticgardencompany.com
Hall Farm, Saxmundham Road, Aldeburgh

THE MILL INN

Proud to be a Pub!

Eat with Us • Drink with Us • Stay with Us
NEW Boutique Seaview Rooms
www.millinnaldeburgh.co.uk
Tel: 01728 452563
Market Cross Place - opposite the Moot Hall

ALDEBURGH JUBILEE HALL

Your local theatre and arts venue
Serving the community since 1887

Crabbe Street, Aldeburgh IP15 5BN
www.aldeburghjubilee.co.uk
Registered Charity No:1155896

Thai Street Cafe Tree

"a hidden gem"

Authentic Thai dishes, cooked from fresh, local ingredients.
Eat in or Takeaway
Click & Collect
Open Tues-Sat: 5-9pm
Tel: 01728 453530
106-108 High Street, Aldeburgh
www.thaistreetcafealdeburgh.com

Harden's MICHELIN

The Lighthouse

OPEN 7 DAYS A WEEK
Book Now
WWW.LIGHTHOUSERESTAURANT.CO.UK
77 HIGH ST, ALDEBURGH, SUFFOLK, IP15 5AU

The little Dog Boutique

Wag & Bone

Canine Accessories
127b High Street,
IP15 5AR
T: 01728 453366
www.wagandbone.dog

O&C Butcher

ALDEBURGH • SUFFOLK

129-131 High Street,
Aldeburgh, IP15 5AS
www.ocbutcher.co.uk

suffolk hideaways

coastal and country holiday retreats

suffolkhideaways.co.uk | 01728 666 300

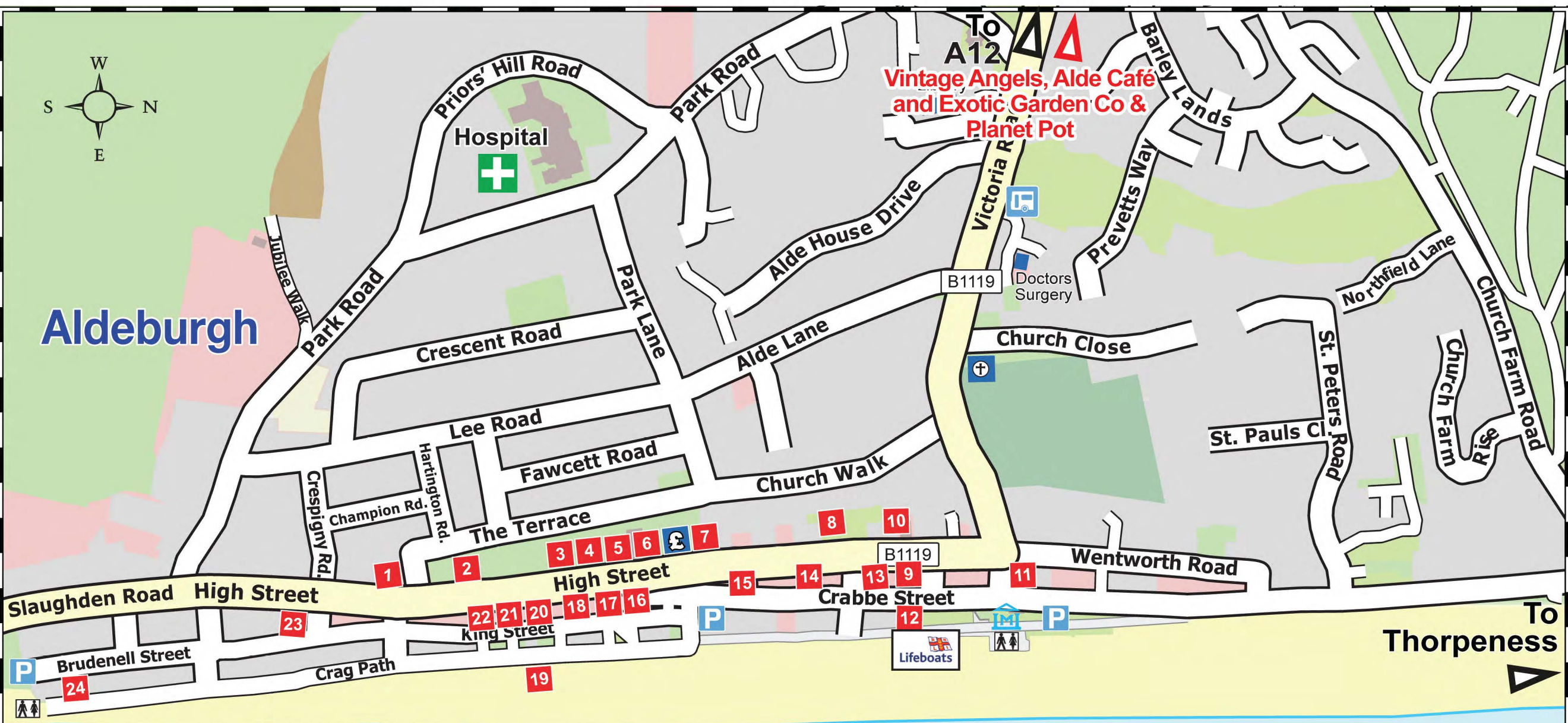
THE PUG AND THE PUSSYCAT

Card, Gift & Lifestyle Boutique

179 High Street, Aldeburgh, IP15 5AN
pugandpussycat.co.uk @pugandthecatshop

THOMPSON'S GALLERY & SCULPTURE GARDEN

175 High Street, Aldeburgh, IP15 5AN
01728 453743
www.thompsonsgallery.com



1. Two Magpies Bakery & Café

2. The Pug and the Pussycat

3. Thompson's Gallery

4. Suffolk Hideaways

5. O&C Butcher

6. Wag & Bone

7. East of England COOP

8. The Light House

9. Stay in Suffolk

10. Aldeburgh Cinema

11. The Mill Inn

12. Aldeburgh Jubilee Hall
13. Thai Street Café

14. The Chocolate Teapot

15. Riley & Riley

16. Aldeburgh Kitchen Company

17. Lawson's Deli

18. Ballroom Arts

19. Aldeburgh Lookout

20. Joli Fashion

21. Ives Ice Cream Parlour

22. Fleur

23. Aldeburgh Fish and Chips

24. Fishers Gin

FISHERS

THE SPIRIT OF THE COAST
GIN DISTILLED IN ALDEBURGH

OPEN FOR TOURS & TASTINGS
YEAR ROUND

For more information or to book,
please visit www.fishersgin.com
or call 01728 454201

Aldeburgh Fish & Chips

Family run since 1967

226 High Street, Aldeburgh IP15 5DJ
01728 452250
www.aldeburghfishandchips.co.uk

TWO MAGPIES BAKERY

181-183 High Street, Aldeburgh

Two Magpies serves freshly baked sourdough bread, morning pastries, savouries, sweet treats and @Allpresspresso coffee to takeaway or eat in.
Open everyday 8am - 5pm @2magpiesbakery

DISCOVER Your CREATIVE SELF

www.aldeburghbeachlookout.com
www.carolineewiseman.com
The Aldeburgh Beach Lookout and Art House
caroline@carolinewiseman.com

RNLI Aldeburgh Lifeboats

Come and look round the Lifeboat Station and visit Freddie Cooper, our Lifeboat. Browse gifts, souvenirs and more in the Lifeboat Shop next door.

Check website for opening hours
Shop: 01728 454065

The RNLI is the charity that saves lives at sea www.aldeburghlifeboat.org.uk www.rnli.org

Beautiful clothes, by the sea.

FLEUR

FLEURALDEBURGH.CO.UK
FOLLOW US @FLEURALDEBURGH

Joli

Fashion•Life•Style

Joli brings the best in Danish fashion, design and handmade homewares to Suffolk.

158 Aldeburgh High Street
IP15 5AQ
www.jolisuffolk.co.uk

LAWSON'S DELICATESSEN

Fresh Bread • Olive Bar
Local Produce • Fruit & Veg

138 High Street, Aldeburgh, IP15 5AQ
hello@lawsonsdeli.co.uk
01728 454052

Ives ICE CREAM PARLOUR

Over 30 different flavours
Vegan & Gluten free options
Sorbets, Milkshakes, Hot drinks
Open every day
160 High Street, Aldeburgh

BALLROOM ARTS

ARTS & EVENTS VENUES FOR HIRE

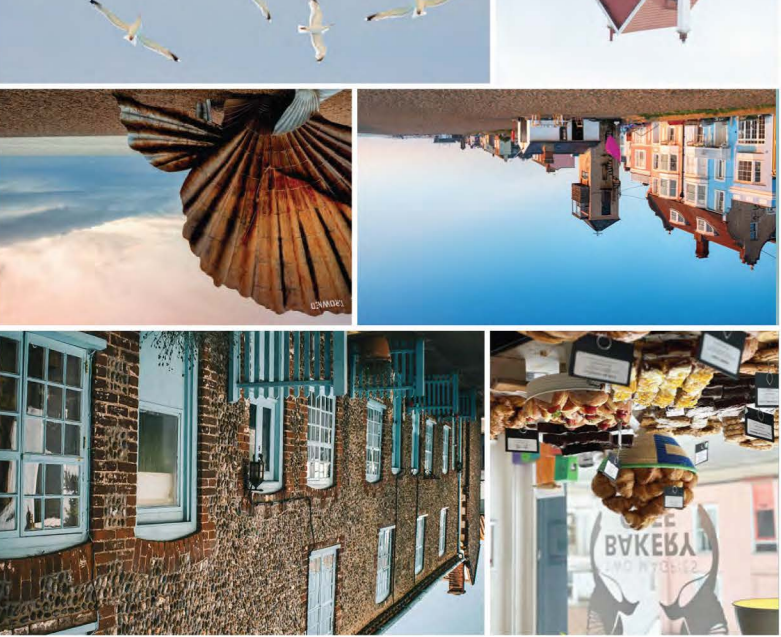
152A HIGH STREET, ALDEBURGH, IP15 5AQ
WWW.BALLROOMARTS.ORG

Thorpness and Leiston further along the coast. Scallop, and then take time to explore the delights of. Enjoy fish and chips on the beach, visit the famous a fabulous selection of shops, cafes and restaurants.

Visit • Eat • Stay

A guide to the best places to:

SHOP • EAT • STAY



Visitor Map of Aldeburgh

Thorpness, Leiston and the local area

Useful Information

The Peninsular Medical Practice, Church Farm House, Victoria Road, Aldeburgh, IP15 5BR. Opening Hours: Monday – Friday: 8am-6.30pm. Tel: 01394 411641

Aldeburgh Library, Victoria Road, Aldeburgh, IP15 5EG. Opening hours: Mon/Tues/Thurs/Fri: 9am-1pm, Weds: 9am-6pm, Sat: 10am-3pm & Sun: 10am-1pm. Tel: 01728 452592

Aldeburgh Town Council, Market Cross Place, Aldeburgh, IP15 5DS. Tel: 01728 452158

RNLI Aldeburgh Lifeboat Station, Crag Path, Aldeburgh IP15 5BP. Shop and See website for opening hours.

Snape Maltings

A place to shop, discover and inspire

Snape Maltings, Suffolk IP17 1SP brittenpearsarts.org

Published 2024 by aboutmedia
T: 01728 666352
www.aboutmedia.co.uk

THE ART STATION

ARTIST STUDIOS / CO-WORKING / TECH SPACE / EXHIBITIONS / EVENTS / WORKSHOPS / ART & LEARNING PROGRAMME

A creative hub for rural East Suffolk, in the heart of Saxmundham.

48 High Street
www.theartstation.co.uk
@the_artstation

The George Farnham Gallery

Multi award-winning contemporary art gallery showcasing an eclectic mix of talented local artists.

Open Tues-Fri 10.30am-4pm & Sat 10am-1pm
Call 01728 603308 to arrange an appointment
"Winner of Best Independent Art Gallery 2023"

6a The High Street, Saxmundham IP17 1DD
www.thegeorgefarnhamgallery.co.uk

the-barn.co

01728 652159
Friday Street, Suffolk

Vintage and artisan delights: recycled and refurbished; repurposed and pre-loved art, home, garden and giftware.

Open Daily (except Weds) 10am-4.30pm
Find us behind Friday Street Farm Shop, just off the A12
T: 01728 652159
www.the-barn.co

Friday Street Farm

FARM SHOP • BUTCHERY • DELI
CHEESE ROOM • KITCHEN

SHOP OPENING HOURS
Mon-Sat: 8:30am-5:30pm
Sun: 9am-5pm

KITCHEN OPENING HOURS
Daily: 8:30am-5:00pm

WWW.FRIDAYSTFARM.CO.UK
01728 602783
Farnham, Suffolk IP17 1JX

Friday Street Farm

FARM SHOP • BUTCHERY • DELI
CHEESE ROOM • KITCHEN

SHOP OPENING HOURS
Mon-Sat: 8:30am-5:30pm
Sun: 9am-5pm

KITCHEN OPENING HOURS
Daily: 8:30am-5:00pm

WWW.FRIDAYSTFARM.CO.UK
01728 602783
Farnham, Suffolk IP17 1JX

ESCAPE ROOM

Can you crack the codes and escape the room in 60 minutes?

www.suffolkescaperoom.co.uk
07824 999115
3 fun immersive games to play!

Published by: aboutmedia
T: 01728 666352
E: info@aboutmedia.co.uk

The Crown Inn at Snape

Country pub and Italian Restaurant serving rustic regional dishes. Extensive Italian wine list.

"A little taste of Italy in the Suffolk countryside"

To book call 01728 689112
Bridge Road, Snape IP17 1SL
www.thecrowninnat Snape.co.uk

The Early Music Shop

An independent music shop focussing on Early Music instruments, accessories and printed music, all based in the beautiful surroundings of Snape Maltings.

Our knowledgeable staff have years of experience and expertise, providing excellent customer service!

Open seven days a week 10am-4pm
The Early Music Shop, Snape Maltings IP17 1SP
www.earlymusicshop.com

MALT Café & Takeaway

at Snape Maltings

Monday – Saturday: 9am – 5pm
Sunday: 9am – 4pm

brittenpearsarts.org 01728 687110

DANES LAUNDERERS & DRY CLEANERS

Since 1985

- ✓ Fully finished laundry
- ✓ Wedding & Evening dresses
- ✓ Garment repair & alterations
- ✓ Express shirt service
- ✓ Chair cover cleaning
- ✓ Table linen cleaned & re-starched
- ✓ Duvet & bed linen laundering
- ✓ Service wash
- ✓ Holiday let laundering service
- ✓ Carpet machine hire
- ✓ Clothes care product range

WE NOW HIRE BEDLINEN AND TOWELS FOR DAYS OR WEEKS

Open Monday - Friday T: 01728 452924
5 Saxmundham Road, Aldeburgh IP15 5JA

The Meare Shop & Tearoom Thorpeness

Coffee, Cream Teas, Toasties, Quiches, Mr Whippy, Gifts, Duck Food (Quack!) Plus, wonderful views of Thorpeness Meare

thorpenesstearoom.com

Thorpeness Emporium

Antiques, Collectables, Vintage, Retro, Jewellery, Toys and so much more...

tel: 01728 454639
web: www.thorpenesemporium.co.uk
Open 7 days a week from 10 am
Facing Thorpeness Beach Car Park

BEACH VIEW HOLIDAY PARK

CAFE BAR / PIZZERIA
GLAMPING
LODGES WITH SEA VIEWS

beachviewholidaypark.co.uk
Sizewell Common | Leiston | IP16 4TU
Tel: 01728 830724

EDF EXPLORING ENERGY

Come and visit us Monday to Friday

Our visitor centre is now open at Sizewell B power station

Why not book a plant tour? See for yourself how a nuclear power station works. All plant tours require advanced booking and will also be available at the weekend, subject to availability and demand.

For more information or to book a tour, please contact our Visitor Centre team:
T: 01728 853974
E: sizewelltours@edf-energy.com
Sizewell B Power Station, Leiston, Suffolk IP16 4UR

THE PARROT

"A beautiful 16th century smugglers pub"

Snug Bar & Restaurant serving delicious meals using Salter & King meat and locally sourced produce

Extensive selection of craft Gins & Whiskies

Tue – Sat 12pm – 2.30pm / 6pm – 10pm
Sun 12pm – 5pm
01728 830221
www.aldringhamparrot.com

THE DOLPHIN

"A Great Pub with a Warm Welcome"

Delicious freshly cooked meals using local produce

Summer BBQs in our gorgeous garden

Sunday Roasts
Open Mon – Fri 11am-10pm
Sat 9am-10pm & Sun 9am-9pm
01728 454994
www.thorpenessdolphin.com

THE KITCHEN @ THORPENESS

Open 7 Days a Week

Follow us on

01728 453266
www.thekitchenthorpeness.co.uk